

Theme 3 Prevention Health and Wellbeing

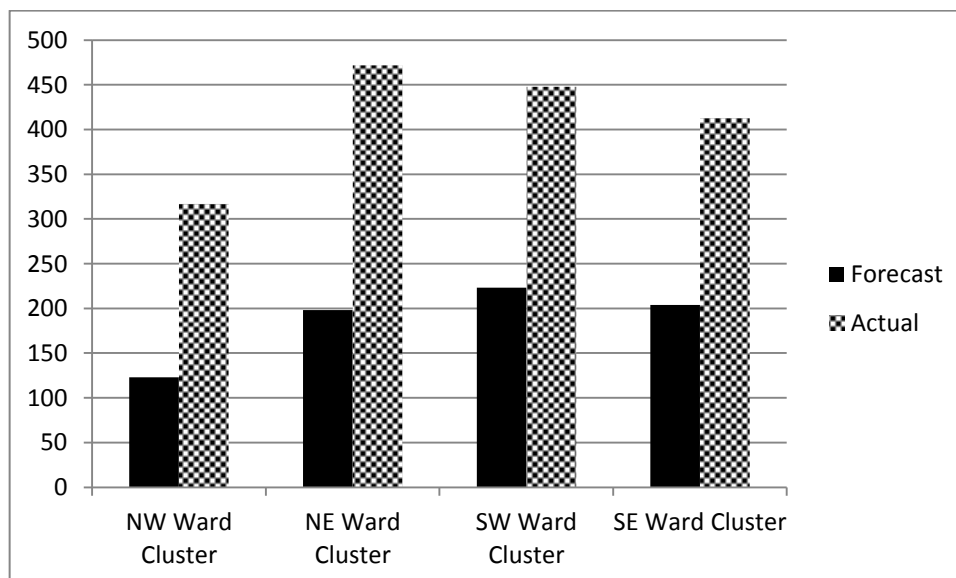
MSG Programme Period 9 (Oct-Dec 2017) Performance Report

Theme 3 – Prevention, Health & Wellbeing: This theme focuses on seeking key outcomes including:

- Increased number of vulnerable residents leading healthier lifestyles through improved diets, taking regular exercise and related activities, including lunch club attendees
- Improved emotional health and wellbeing of children and young people and families
- Reduced loneliness and social isolation
- Greater community cohesion
- Increased knowledge about where to go for advice and information
- Improved health and well-being through access to cultural activity that brings people together, allows for self-expression including projects around memory and cross generational activity

Geographical Breakdown

The table below shows the number of beneficiaries supported during the period October to December 2017 by Ward Cluster:



| NW Ward Cluster | NE Ward Cluster | SW Ward Cluster | SE Ward Cluster |
|---|--|---|--|
| <ul style="list-style-type: none"> • Bethnal Green • Spitalfields & Banglatown • St Peter's • Weavers | <ul style="list-style-type: none"> • Bow East • Bow West • Bromley North • Bromley South • Mile End | <ul style="list-style-type: none"> • Shadwell • St Dunstons • St Katherine's & Wapping • Stepney Green • Whitechapel | <ul style="list-style-type: none"> • Blackwall & Cubitt Town • Canary Wharf • Island Gardens • Lansbury • Limehouse • Poplar |

Prevention, Health & Wellbeing Project Portfolio – Adult Services

| No. of live projects – Oct-Dec 2017 | No. of projects classed as GREEN | No. of projects classed as AMBER | No. of projects classed as RED |
|-------------------------------------|---|---|---------------------------------------|
| 14 | 14 | 0 | 0 |

There are 14 projects in this category; all of which are classed as 'Green' and are on course to meet the agreed expenditure targets, service outputs and outcomes as indicated in monitoring reports received.

Lunch Club Project Portfolio – Adult Services

| No. of live projects – Oct-Dec 2017 | No. of projects classed as GREEN | No. of projects classed as AMBER | No. of projects classed as RED |
|-------------------------------------|---|---|---------------------------------------|
| 11 | 11 | 0 | 0 |

There are now 11 projects in this category; all of which are classed as 'Green' and are on course to meet the agreed expenditure targets, service outputs and outcomes as indicated in monitoring reports received.

Lifelong Learning & Sport Project Portfolio – Children's Services

| No. of live projects – Oct-Dec 2017 | No. of projects classed as GREEN | No. of projects classed as AMBER | No. of projects classed as RED |
|-------------------------------------|---|---|---------------------------------------|
| 9 | 7 | 0 | 2 |

There are 9 projects in this category; 7 of which are classed as 'Green' and are on course to meet the agreed expenditure targets, service outputs and outcomes as indicated in monitoring reports received.

2 projects classed as Red:

Tower Hamlets Youth Sport Foundation - Active Families

No monitoring report has been received for the October to December 2017 period.

Bethnal Green Weightlifting Club – Bethnal Green Weightlifting Club

Following the Grants Spotlight Review meeting a meeting was held with BGWC on 11/01/18 to address the issues raised at the Spotlight meeting – underperformance against output targets, unclear definitions of output actuals reported. It was discussed that if the targets were not going to be met then a Significant Variation Request would be needed. It was explained that a case would need to be made as to why the Grant Offer Letter targets were requested to be changed and that a significant variation form be completed.

Appendix 4.3

It was explained that if a significant variation request included a substantial reduction in outputs then a reduction in grant funding may also be required. BGWC submitted a Significant Variation on 27/02/18. The comments in the Key achievements section are from the Jul-Sep 17 period. The Oct-Dec 17 return has not been submitted as target outputs and definitions needed to be revised to reflect actual delivery on the ground. This is why the significant variation form was submitted.